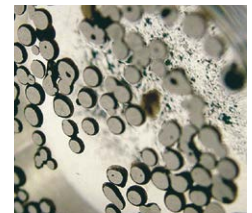


## MOUNTING

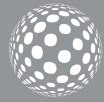
# ECOPRESS 52/102/202





**AUTOMATIC**  
**MOUNTING PRESS**

# ECOPRESS 102/202



ECOPRESS 102/202 are high capacity, state of the art automatic mounting presses having advanced software with programmable coloured HMI touch screen controls. Robust bayonet closure allows for quick and safe operation. Wide selection of mould assemblies from 25 to 50 mm in diameter are available. Two mounts can be produced simultaneously with the use of an intermediate ram. ECOPRESS 202, available with dual cylinder can produce four mounts at a time offering a perfect solution for labs with high specimen throughput.

## DESIGN & OPERATION

All ECOPRESS models have electrohydraulic operation which do not require air. The sample is ejected fast and very smoothly. All hydraulic components are housed in an ABS cabinet which is ergonomically designed.

ECOPRESS 102/202 have preprogrammed moulding sequences built-in (factory set) from which you can choose according to your own applications. You only need to place the sample in the mould, select the program number for your specific application and depress the "Start" button. That's it! ECOPRESS does the rest for you! After pressing the start key, the fully automatic program sequence is executed with the preselected parameters. The pressure, heating and cooling are automatically controlled and the total cycle time of a complete cool mount takes 7 to 9 minutes. The parameters can be changed and adjusted during the mounting process.

ECOPRESS 102/202 has additional capacity to store up to 99 operator-created programs. User-friendly program data and instructions are displayed on a large touch screen LCD.



Ecopress 202, Automatic Mounting Press with Dual Cylinders



ECOPRESS 102



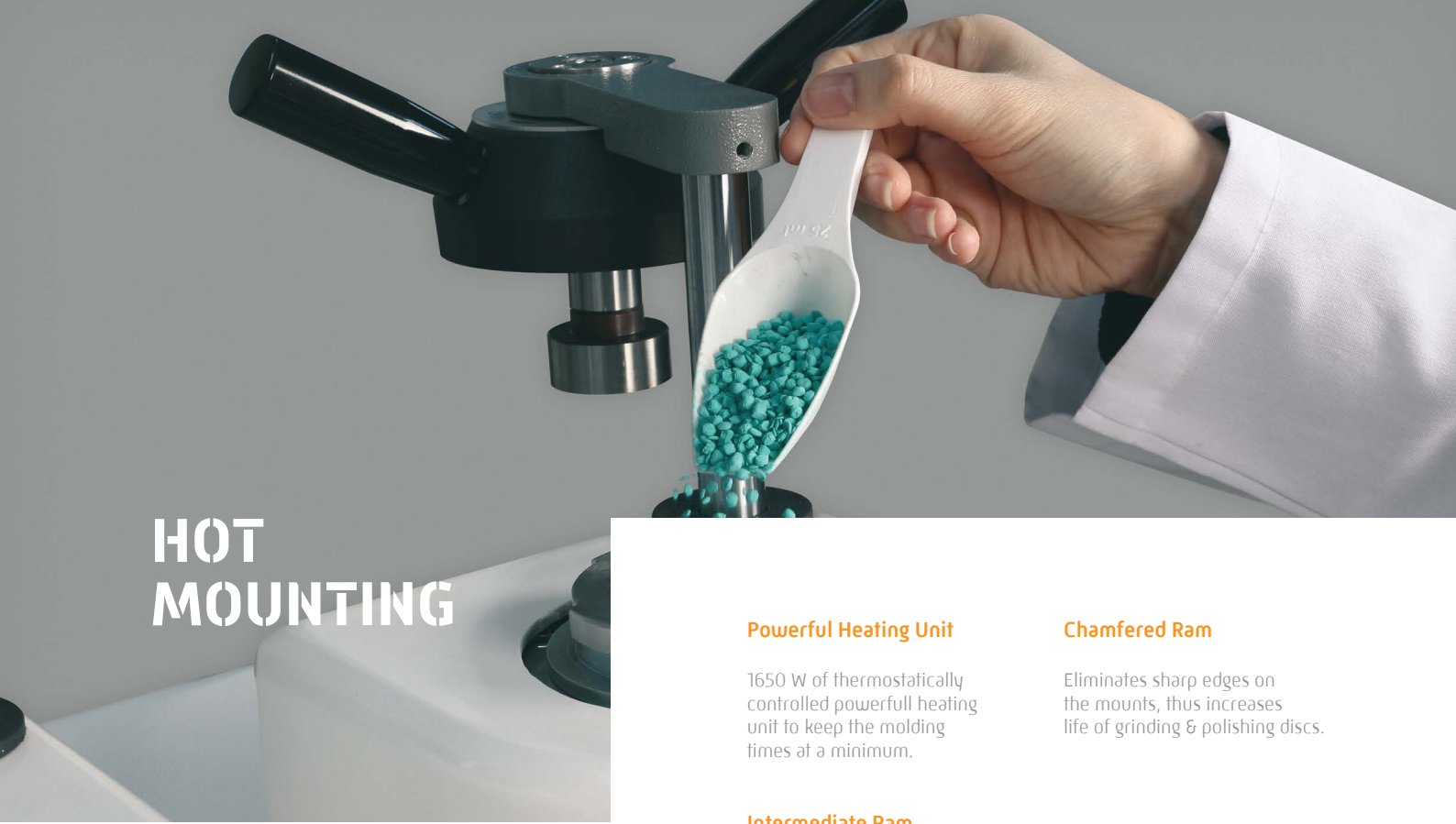
Mould cover



Programmable HMI Touch Screen



User Friendly Software



# HOT MOUNTING

### Powerful Heating Unit

1650 W of thermostatically controlled powerful heating unit to keep the molding times at a minimum.

### Chamfered Ram

Eliminates sharp edges on the mounts, thus increases life of grinding & polishing discs.

### Intermediate Ram

Allows to double your throughput with the included intermediate ram at the same cycle.



Ecopress 202, Perfect solution for laboratories with high specimen throughput



# ECOPRESS 52



ECOPRESS 52 is a cost effective automatic digital mounting press with hydraulic pressure ( requires no air ). It is fully automatic and suitable for all current hot mounting materials used in materialography. User friendly touch - pad controls for mounting parameters provide high productivity with last parameter settings being retained in the memory.

ECOPRESS 52 is an easy to use mounting press. All touch-pad controls, direct reading pressure gauge and valve are on the front panel.

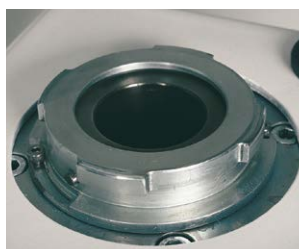
Simply place the sample and the mounting powder in the cylinder and close the mold closure. Set the "Molding Temperature", "Heating Time", "Cooling Time" and "Pressure" by using the user friendly knob then press the "Start" key. Pressure, heating and cooling are automatically controlled and the total cycle time for a complete cool mount takes 7 to 9 minutes. The actual heating temperature and the heating time are digitally displayed throughout the moulding cycle. The last parameter settings are always retained in the memory. An audible signal notifies the operator when the process is completed.



Modern-looking touch pad controls with ergonomic turn knob allow fast and easy setting of mounting parameters and increase productivity



Easy Access



Bayonet Closure



Insulated Mould Closure



Emergency Stop for Operator Safety



Consistent results with programmable parameters



Easy and comfortable operation

## FEATURES

### Heating & Cooling

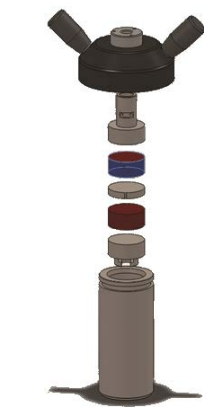
The high efficiency combined heater/cooler is housed in the upper part of ECOPRESS. With 1650 W of thermostatically controlled heating power, molding times are kept to a minimum. At the end of the heating cycle, the cooling water is automatically switched on and will turn off once the "Cooling Temperature" is reached. When the stand-by mode is switched on, pre-warming maintains a constant ready to use temperature, thus reducing the cycle time. Three cooling modes are available as "Standard", "Slow" and "Based on Time". Slow cooling is for thermoplastic resins which require far longer cooling times for best mount clarity. A stainless steel "Recirculating Cooling Unit" is optionally available.



Powerful Heating Unit



Mould cylinder, upper ram, lower ram



Intermediate Ram

### Mould Assemblies

ECOPRESS mounting presses can accept several mould sizes from 25 mm to 50 mm. All moulds can be exchanged simply and easily. An intermediate ram can be used to double the production capacity. Insulated mold closure protects the operator. Optional Chamfered Rams provide a beveled face around the edge of the mounted specimen and eliminate sharp edges. The chamfered rams increase the efficiency of grinding and polishing process and saves time and consumables. It also prevents the risk of damage in the moulds caused by hard specimens.

Easy-to-use dovetail connection for the lower ram eliminates the need for mechanical fastening.

Robust bayonet mold closure maximizes safety and eliminates the need to clean cylinder threads before closing. There will be no need to replace molds because of worn threads in the future.

# SPECIFICATIONS

ORDER NO	25 10	25 11	25 12
MODEL NO	52	102	202
Max. Pressure, bar	300	300	300
Max. Temperature, C	200	200	200
Heating Power, W	1650	1650	2x1650
Water Cooling	Yes	Yes	Yes
Slow Cooling	Yes	Yes	Yes
Operation	Automatic/Hydraulic	Programmable/Hydraulic	Programmable/Hydraulic
Display	Digital Display	7" HMI touch screen LCD	7" HMI touch screen LCD
Mould Assembly, mm.	25-50	25-50	25-50
Size W x D x H, (cm)	36 x 55 x 48	36x 55x 48	49 x 55 x 48
Weight, (kg)	37	38	54
Mains, [V]	1 phase, 230V, 50Hz. AC	1 phase, 230V, 50Hz. AC	1 phase, 230V, 50Hz. AC

## 25 10 — ECOPRESS 52

Automatic Mounting Press Fully automatic operation with microprocessor controls, electro hydraulic pressure (requires no air), with touch pad front panel controls and digital display of; heating time, moulding temperature, cooling temperature, ram up/down, auto/manual cooling, cycle start/stop, last parameter settings retained in the memory, with ergonomic turn knob for fast and easy setting of parameters, with direct reading pressure gauge, moulding pressure up to 300 bar, temperature up to 200°C, operation time up to 35:00 minutes, short cycle time, thermostatically controlled heating power of 1650W, automatic cooling cycle, programmable slow cooling feature, stand-by temperature, selectable mould sizes from 25 mm to 50 mm, easy to close bayonet closure, audible warning signal, ready for operation. 230 V, 1-phase, 50/60 Hz. Mould assemblies are ordered separately. Includes a standard set of mounting consumables composed of 2 different hot mounting compounds; 1 kg of each and a total of 2 kgs.

## 25 11 — ECOPRESS 102

Programmable Automatic Mounting Press 7" HMI touch screen control, with Siemens PLC control unit, programmable with colored LCD display, program based mounting sequences, electro hydraulic pressure (requires no air), pressure up to 300 bar, temperature up to 200 °C, operation time upto 35:00 minutes, short cycle time, thermostatically controlled heating power of 1650W, automatic cooling cycle with three modes of cooling rates (standard cooling, slow cooling and based on time), programmable preheating and preloading, stand-by temperature, selectable mould sizes from 25 mm to 50 mm, easy to close bayonet closure, audible warning signal, ready for operation. 230 V, 1-phase, 50/60 Hz. Mould assemblies are ordered separately. Includes a standard set of mounting consumables composed of 2 different hot mounting compounds; 1 kg of each and a total of 2kgs.

## 25 12 — ECOPRESS 202

Programmable Automatic Mounting Press with dual cylinders 7" HMI touch screen control, with Siemens PLC control unit, programmable with colored LCD display, program based mounting sequences, electro hydraulic pressure (requires no air), pressure up to 300 bar, temperature up to 200 °C, operation time up to 35:00 minutes, short cycle time, thermostatically controlled heating power of 2X1650W, automatic cooling cycle with three modes of cooling rates (standard cooling, slow cooling and based on time), programmable preheating and preloading, stand-by temperature, selectable mould sizes from 25 mm to 50 mm, easy to close bayonet closure, audible warning signal, ready for operation. 230 V, 1-phase, 50/60 Hz. Mould assemblies are ordered separately. Includes a standard set of mounting consumables composed of 2 different hot mounting compounds; 1 kg of each and a total of 2 kgs.

### Mould Assemblies

- 26 01-03 — Mould assembly, Ø1" with intermediate ram
- 26 02-03 — Mould assembly, Ø1 1/4" with intermediate ram
- 26 03-03 — Mould assembly, Ø1 1/2" with intermediate ram
- 26 07-03 — Mould assembly, Ø2" with intermediate ram
- 26 04-03 — Mould assembly, Ø25 mm with intermediate ram
- 26 05-03 — Mould assembly, Ø30 mm with intermediate ram
- 26 06-03 — Mould assembly, Ø40 mm with intermediate ram
- 26 08-03 — Mould assembly, Ø50 mm with intermediate ram

- 26 11-03 — Mould assembly, Ø1" with chamfered bottom ram and intermediate ram
- 26 12-03 — Mould assembly, Ø1 1/4" with chamfered bottom ram and intermediate ram
- 26 13-03 — Mould assembly, Ø1 1/2" with chamfered bottom ram and intermediate ram
- 26 17-03 — Mould assembly, Ø2" with chamfered bottom ram and intermediate ram
- 26 14-03 — Mould assembly, Ø25 mm with chamfered bottom ram and intermediate ram
- 26 15-03 — Mould assembly, Ø30 mm with chamfered bottom ram and intermediate ram
- 26 16-03 — Mould assembly, Ø40 mm with chamfered bottom ram and intermediate ram
- 26 18-03 — Mould assembly, Ø50 mm with chamfered bottom ram and intermediate ram

### Accessories for ECOPRESS

- GR1363 — Recirculating Coolant System composed of 40 liters stainless steel cooling tank, 24V recirculating pump and connection hoses, etc.
- GR1397-00 — Water Filtering and Pressure Regulator System for city water inlet. Keeps the water pressure at the appropriate level and protects from sudden pressure spikes. Filtering out impurities in the water and prevents calcification.
- YM3824-00 — Spare Siliphos Cartridge Filter (for Water Filtering and Pressure Regulator System [GR 1397-00])
- GR 1967 — Spare Part Kit for ECOPRESS  
Recommended Set of Spare Parts, ECOPRESS 52/102/202

\* Other voltages and frequencies available upon request. Please state when ordering. All specifications are subject to change without notice.

