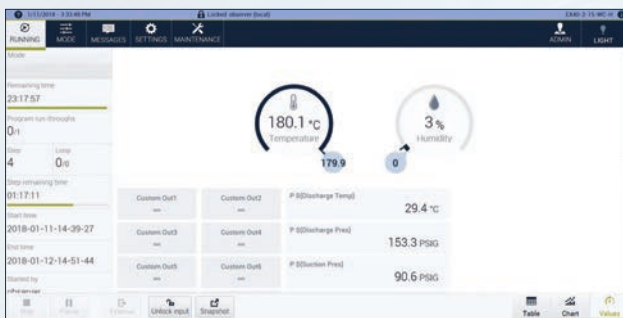


The Advanced Controller Designed by End Users - for End Users

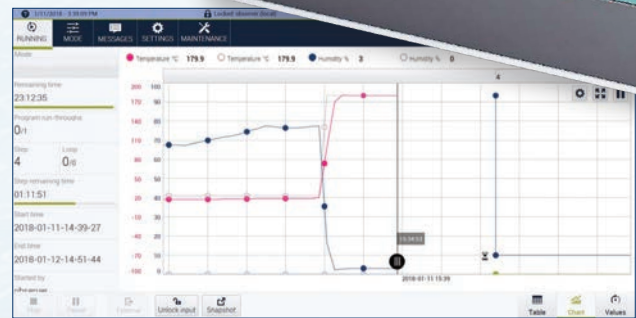
WebSeason® - the controller designed by end users, utilizing state-of-the-art web technology that exceeds the requirements for today's industrial standards. The look and feel is comparable to a mobile device- with swiping, 2-finger zoom, quick response, making it easy to use.



- Real Time Interface
- Multi-User
- Multi-Language
- Connect from any Web-Based Device
- Access from Anywhere Around the Globe
- 7" and 10" Screens Available



Main Menu



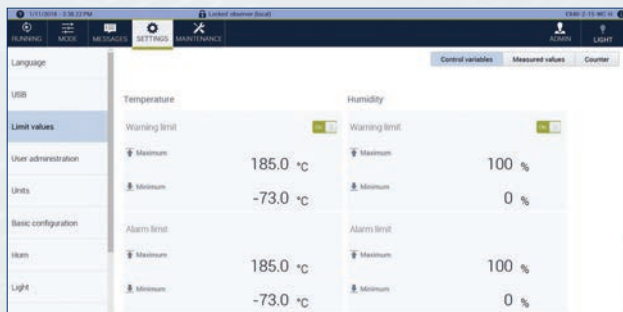
Real Time Profile



Multi-Language

Step	Duration	Temperature °C	Humidity %	Custom Out1	Custom Out2	Custom Out3	Custom Out4	Custom Out5	Custom Out6
1	00:00:00	179.8	0	0	0	0	0	0	0
2	00:00:00	Wait for 179.9	0	0	0	0	0	0	0
3	02:00:00	180.0	0	0	0	0	0	0	0
4	00:00:00	Wait for -70.0	0	0	0	0	0	0	0
5	02:00:00	-70.0	0	0	0	0	0	0	0
6	00:00:00	Wait for 180.0	0	0	0	0	0	0	0
7	02:00:00	180.0	0	0	0	0	0	0	0
8	00:00:00	Wait for -70.0	0	0	0	0	0	0	0

"Table" Programming



Warning/Alarm Limits

User administration	Name	First and Last Name	User group	Act.	State	Comment
	admin	Admin	Administrator	●		
	userhigh	UserHigh	UserHigh	●		
	userlow	UserLow	UserLow	●		

Multi-Level User Passwords

Web Season® - Program, Control and Monitor your testing - From anywhere around the globe.

Up to six users can simultaneously use any web-based device (such as smart phones, tablets, or laptops) to connect to the controller remotely, in their own language and choice of units of measurement. Multi-users can also create a testing program, view on-going tests, change set points, and more - all at the same time.

In addition, any user has remote access to view information, such as remaining test time, number of cycles, current steps and actual values, as well as warning and alarm notices.

With Weiss Technik optional **S!mpati** and **S!mpati TimeLabs** software, additional data and real-time images of the specimen can be viewed.



Specifications

Touch Panel	Auto dimming, capacitive sensing
Program Memory	100 programs maximum
Program Controller	Start parameters for programs: immediate, delayed, real time, pause
PID controller	Special control algorithms, define/change per output demands
Segments	100 per program (maximum)
Program Cycles/ Loops	9999 maximum/ (250 nested)
Switch Inputs (Digital)	2 (load max. 24 V-DC, approx. 30 mA)
Switch Outputs (Digital)	8 (potential-free contacts or 24 V-DC)
Password Protection	3 levels, to prevent accidental changes
Limit Value Monitoring System	For temperature and humidity
Display Units	Switchable between imperial/metric
Diagnostic System	For information on operating times and possible operating failures
Serial Interface (Option)	For connection to a host computer system (i.e optional S!MPATI ® Remote software, S!MPATI ® Timelabs, or 3rd-party network)
TCP/IP Ethernet Interface	For communication with 3rd-party software
Multi-Language Display	10 languages (selectable) including English, Chinese, German, French, Italian, Korean, Russian, Polish, Czech, and Spanish

Stand the test of time.

Weiss Technik North America, Inc.
 3881 N. Greenbrooke Dr. SE
 Grand Rapids, MI 49512 USA
 (616) 554-5020 • Fax: (616) 554-5021
 www.weiss-na.com
 After Hours Service Support Helpline: 1-800-361-6731

Join Us [LinkedIn](#)



Weiss Technik North America, Inc. Calibration Services are accredited by A2LA to ISO/IEC 17025



Weiss Technik North America, Inc. Quality System is registered to ISO9001:2015